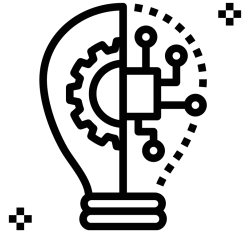


Business Model Categories

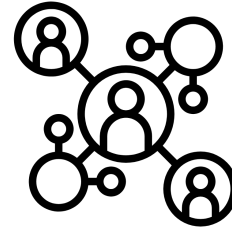
TECHNOLOGY CREATOR



Generate and deliver intellectual property

E.g. biotech, software and data companies (Microsoft)

NETWORK ORCHESTRATOR



Facilitate transactions and interactions within a network

E.g. Airbnb, eBay, Facebook

ASSET BUILDER



Make and sell physical things

E.g. vehicles, electronics, appliances, apparel, etc. (Honda, Apple, LG)

SERVICE PROVIDER

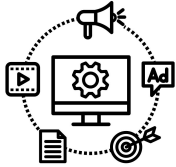


Offer services to meet needs

E.g. repair services, health care service providers, consultants

Non-Profit Financial Models

CORPORATE-BASED



- Sponsorships for initiatives (in exchange for advertising, etc.)
- In-kind contributions

GOVERNMENT-BASED



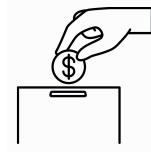
- Partnerships with gov't agencies to provide essential services
- Grant programmes

FOUNDATION-BASED



- Grants (that align with the mission of the foundation)

DONATION-BASED



- Fundraising events
- Campaigns targeting individual donors or corporate

MIX OF DIFFERENT SOURCES